



Pathway to the Future

# MEASURE L BOND UPDATE

September 10, 2019

## Measure L – Overview

- Project Updates
- Program Schedule Review

# Measure L – Project Updates

## Cherrywood Elementary School - FIS

- Completion September 2019
- In progress:
  - Elevator (state inspection is scheduled for 9/16/19)
  - Ceilings
  - Painting
  - Finish Plumbing
  - Finish HVAC
  - Lighting
  - Fire Alarm

## Piedmont Parking Lot

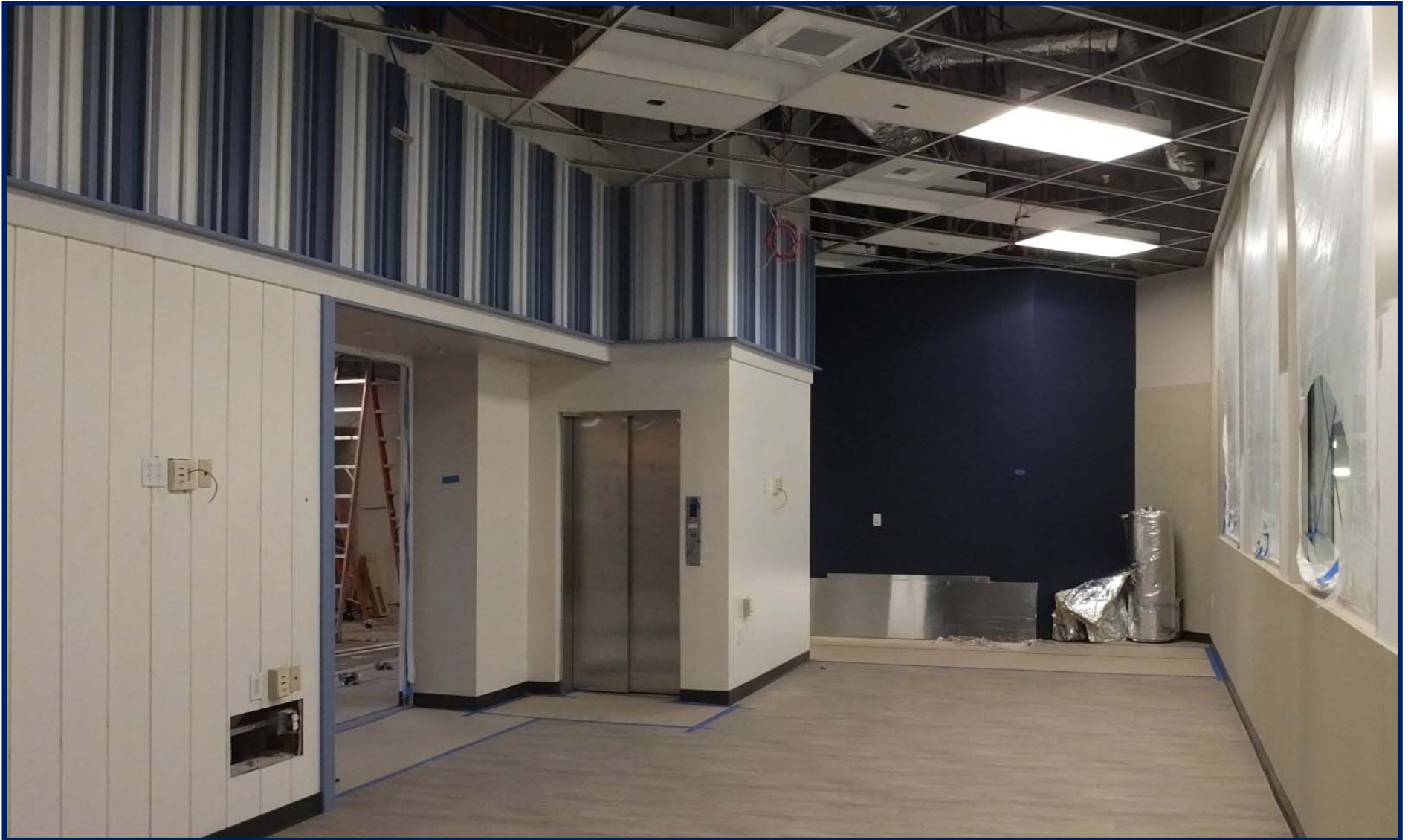
- Progress:
  - New Driveway Approach

# Measure L – Project Updates



Cherrywood FIS – FIS Space Looking East

# Measure L – Project Updates



Cherrywood FIS – Front FIS Space Looking East

# Measure L – Project Updates



Cherrywood FIS – Kitchen Area - August

# Measure L – Project Updates

## Additional Projects

- In Construction:
  - Traffic Gates
    - Phase 1 - BT, CW, NW, SD, VP, and MM
  - Portable Restroom Replacement @ Brooktree
  - Wireless thermostat's at portables
- In Design/Bidding:
  - Traffic Gates
    - Phase 2 – NB, PM, and SM
  - Morrill – HVAC
  - Perimeter Fencing
    - Cherrywood
    - Laneview
    - Noble
    - Ruskin
    - Sierramont





# Measure L – Program Schedule

		Construction Legend																Furniture Legend																																								
		Design				DSA Review				Bid				Award				Preconstruction				Construction				Start of School				Punch List				Furniture Design		Quote Pricing		PO Generated		Furniture Ordered		Lead Time		Furniture Received and Placed														
Construction Projects		2019																2020																																								
Additional Projects	September	October				November				December				January					February					March					April					May					June					July					August					September				
	Week	Week				Week				Week				Week					Week					Week					Week					Week					Week					Week														
	1	2	3	4	1	2	3	4	5	1	2	3	4	5	1	2	3	4	5	1	2	3	4	5	1	2	3	4	5	1	2	3	4	5	1	2	3	4	5	1	2	3	4	5	1	2	3	4	5	1	2	3	4	5	1	2	3	4
<b>Traffic Gates</b>																																																										
BT, CW, NW SD, BP, MM																																																										
NB, PM, SM																																																										
<b>HVAC Projects</b>																																																										
Toyon																																																										
Morrill																																																										
<b>Portable Restroom Replacement @ Brooktree</b>																																																										
<b>Perimeter Fencing</b>																																																										
Cherrywood																																																										
Laneview																																																										
Noble																																																										
Ruskin																																																										
Sierramont																																																										
<b>Paving - Laneview</b>																																																										
Staff Parking Lot																																																										
<b>Wireless Thermostat @ Portables</b>																																																										
<b>Main Alarm Security Panel Replacement</b>																																																										
<b>Lunch Shade Structures</b>																																																										
Noble																																																										
Ruskin																																																										
Morrill																																																										
<b>Furniture Projects</b>																																																										
Cafeteria Table Replacement																																																										
Library Shelving																																																										



Thank You